



RFID Portfolio

More Transformation. No Complication.





Full potential. As promised.

While the promise of RAIN RFID has been enticing, it wasn't always practical. Now, the long-awaited potential of consistent and reliable RFID is here and within reach. Get robust gains without the pains.

Leverage Zebra's decades of expertise, design thinking and software development to achieve maximum RAIN RFID efficiency, while minimizing the pains of multi-vendor solutions. Unlike other players, Zebra gives you the industry's broadest, field-proven RAIN RFID portfolio for unmatched accuracy and interoperability. Connect it all and create a platform that elevates every system, device, tag and worker.

Now you're in command, but not on your own. With an ecosystem of support and partners to guide you, the way forward is clear.



Relentless Performance in Any Environment

Stop searching for inventory and assets. With Zebra RFID solutions, you will automatically know the location of business-critical items—whether you're tracking merchandise in your stores, medication in your hospitals or goods flowing in and out of your warehouses. Made for your environment, application and conditions, Zebra RFID solutions are designed to make you more effective.

Transportation and Logistics



Deliver non-stop service from the first mile to the last

- Employee safety
- Fleet management
- Inventory management
- Supply chain management
- Asset tracking
- Sortation/handling/service quality
- Mobile dispatch
- Terminal operations
- Port and yard management
- Below-the-wing services

Manufacturing



Increase productivity from the plant floor to the finished product

- Materials management
- Item-level inventory visibility
- Work-in-process (WIP)
- Vehicle and yard management
- Asset utilization/tracking and analysis
- Shipment validation
- Supply chain tracking/management
- DSD route accounting/field service
- Fulfillment/replenishment
- Tool tracking
- Theft prevention



Healthcare

Strengthen patient safety from admissions to discharge

- Equipment/asset tracking
- Item-level inventory visibility
- Supply chain management
- Patient/people monitoring
- Staff utilization
- Document/data file management
- IT asset tracking
- Specimen tracking



Retail and Hospitality

Give customers an experience that keeps them coming back

- Item-level inventory management
- Store replenishment
- Omni-channel fulfillment
- Point of sale
- Interactive fitting rooms
- Loss prevention
- Customer experience
- Brand authentication



Warehouse

Manage inventory across your supply chain

- Warehouse and yard management
- Pick and putaway
- EDI transactions
- RFID aided forklifts



Field Mobility

Empower your team wherever the job takes them

- Mobile dispatch
- Work order management
- Asset tracking
- Maintenance/inspection
- Meter reading
- Vegetation management



Fixed Readers, Antennas, Setup Wizard and Software

Next-level inventory visibility

Make sure the right asset is in the right place at the right time with Zebra's complete RAIN RFID portfolio—the deepest and widest in the industry.

Fixed RAIN RFID Readers and Infrastructure

Achieve maximum asset visibility across your enterprise. Get even more insight with Zebra's RFID Array Reader which provides visibility into the pinpoint location of all of your tagged assets, including if they are on the move.



ATR7000 RTLS Reader*

Redefine operational efficiency with superior, affordable real-time locationing

* Not available in EMEA



FX9600 Fixed RFID Reader

Top-of-the-line performance for high-volume and rugged environments



FX7500 Fixed RFID Reader

The small enterprise reader, big on speed and accuracy



ST5500 Transition RFID Reader

Know what's entering and exiting your facility



RFID Reader Software

You don't have to be an expert to set up and optimize Zebra RAIN RFID readers. Our tools help you every step of the way—easily configure and deploy your RFID readers without complications or delays.



123RFID Desktop

Make RFID deployments as easy as 1, 2, 3

Our free, intuitive wizard presents easy-to-understand options in drop-down menus, radio buttons and sliders. Use built-in help and how-to-videos to find answers to your questions.



123RFID Mobile

Get RFID deployment mobility

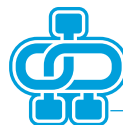
Leverage 123RFID mobility for more flexible deployment and easier access to our free, intuitive wizard.



FX Connect

Lower IT burden, faster RFID implementation

Quickly and easily configure and deploy FX Series fixed RFID readers without the need for APIs or application development.



Network Connect

Seamless, secure connections to programmable logic controllers (PLC's)

Connect Zebra FX9600 Fixed RFID Readers to the most widely used Industrial Ethernet protocols and other standard networks without additional conversion hardware.

	Fixed RFID Readers			
	ATR7000	FX9600	FX7500	ST5500

Manufacturing	•	•		•
T&L	•	•		
Retail		•	•	•
Healthcare		•	•	
Warehouse	•	•		
Hospitality			•	

RAIN RFID Antennas

Quickly and accurately track inventory and assets. Our robust antennas offer the high performance and range needed for high traffic and precision.



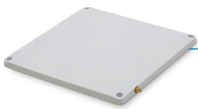
AN440 RFID Antenna

Large area coverage in any environment



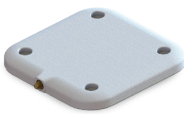
AN480 RFID Antenna

Global flexibility for all enterprises



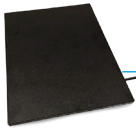
AN510 Ultra-Rugged RFID Antenna

Ultra-rugged and low profile for use indoors and outdoors



AN520 Ultra-Rugged RFID Antenna

Small form factor and high performance



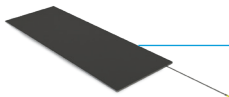
AN610 Slimline RFID Antenna

Sleek. Discreet. Rugged.



AN620 Slimline RFID Antenna

Slimline, ultra-low profile



AN650 Ground RFID Antenna

Rugged and ultra-low profile



AN720 RFID Antenna

Compact indoor/outdoor antenna for customer-facing environments



SN5605 RFID Antenna

Track inventory and mobile devices



SP5504 Point of Sale RFID Antenna

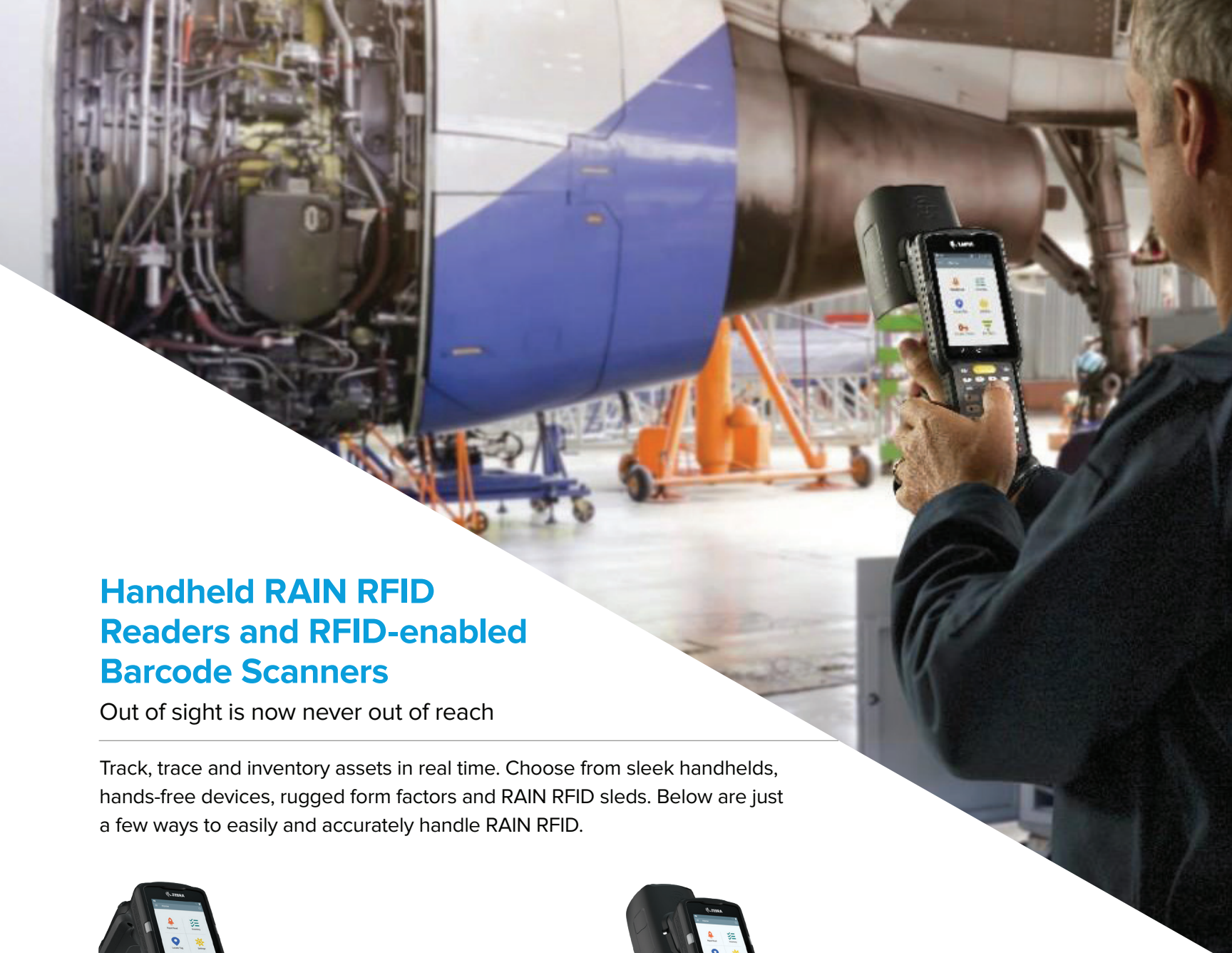
Track inventory in your POS lanes or will-call areas



SR5502 Transition Point RFID Antenna

Track inventory in the backroom from arrival to departure

	RFID Antennas										
	AN440	AN480	AN510	AN520	AN610	AN620	AN650	AN720	SN5605	SP5504	SR5502
Manufacturing	•	•	•	•	•	•		•		•	•
T&L	•	•	•					•			
Retail			•	•	•	•	•	•	•	•	•
Warehouse	•	•	•	•	•	•		•		•	•
Field Mobility	•	•	•								
Hospitality							•				
Healthcare							•				



Handheld RAIN RFID Readers and RFID-enabled Barcode Scanners

Out of sight is now never out of reach

Track, trace and inventory assets in real time. Choose from sleek handhelds, hands-free devices, rugged form factors and RAIN RFID sleds. Below are just a few ways to easily and accurately handle RAIN RFID.



MC3330xR Integrated UHF RFID Reader

Comfort, speed and ease-of-use RFID read performance

Bring a new level of comfort, speed, ease of use and accuracy to your RFID applications. Superior RFID read performance and receiver sensitivity enable lightning-fast and accurate capture of even the most challenging RFID tags. Built for maximum uptime with large touchscreen and physical keypad, yet lightweight with the right ergonomics for all-day comfort.



MC3390xR Integrated Long-Range UHF RFID Reader

Built for your semi-industrial environments

Access a new level of efficiency and accuracy for inventory management, order fulfillment, cross-docking and more. The integrated long-range antenna supports a best-in-class RFID read range, coupled with Zebra's high-performance ASIC radio technology to deliver higher throughput, so inventory counts can be accomplished more quickly and accurately.



RFD40 RFID Sled

Get RFID agility for the future



Work more efficiently. Optimize cycle-counting with industry-best read rates, read range and increased battery capacity. Most importantly, it connects to current and future Zebra mobile computers, so you get a future-proof device.

RFD8500 Bluetooth® RFID Sled

Turn your computer into an RFID reader



Pair the Bluetooth®-enabled RFD8500 Sled with Zebra's TC51/52/56/57/TC52x/TC57x, an Android™ or iOS® smartphone or a laptop or desktop computer, and you're ready to read RFID tags. The RFD8500 is device- and OS-agnostic.

DS9908R RFID Scanner

Bring RFID to your POS or Lab



Close the supply chain loop. Read RFID-tagged merchandise at the point of sale for up-to-the-minute inventory tracking, or RFID tags on laboratory assets and specimen samples for improved laboratory management. The DS9908R is a hybrid handheld/hands-free scanner that offers best-of-breed barcode scanning with RFID reading capabilities in a single platform.

Handheld RFID Readers and RFID-Enabled Barcode Scanners

	MC3330xR RFID Reader	MC3390xR RFID Reader	RFD40 RFID Sled	RFD8500 Bluetooth RFID Sled	DS9908R RFID/1D/2D Reader
Manufacturing	•	•		•	•
T&L	•	•			
Retail	•		•	•	•
Healthcare			•	•	•
Warehouse	•				
Hospitality			•	•	•



RAIN RFID Printer Encoders

Accurate and scalable RFID encoding

Your solution depends on reliable data. Zebra offers the industry's widest range of printers that accurately encode RAIN RFID labels, tags and cards where and when you need them. Build your solution on RFID data you can trust.

	RFID Printer Encoders			
	ZT600, ZT400 Industrial Printers, ZE500 Print Engine	ZQ630, ZQ521 and ZQ511 Mobile Printers	ZXP Series 7, ZC300 Series Card Printers	ZD621R Desktop Printers
Manufacturing	•	•		
T&L	•	•		•
Retail	•	•	•	•
Healthcare		•	•	•
Warehouse	•	•		•
Hospitality			•	



ZT600, ZT400 Industrial Printers and ZE500 Print Engine

Intelligent and industrial brawn

These printers and innovative OEM print engine keep your operations running 24/7 in the harshest environments and the most demanding RFID applications.



ZQ630, ZQ511 and ZQ521 RFID Mobile Printers

Portable, Convenient and Efficient

Our premium mobile printers can print at the point of application, making them a convenient and efficient solution. They are friendly to workers and easy for IT to integrate and manage.



ZXP Series 7 and ZC300 Series Card Printers

Capabilities with credentials

Whether you need high performance or a compact size with groundbreaking simplicity, Zebra UHF card printers deliver.



ZD621R Desktop Printer

Bring RFID printing to your desktop

Premium features, maximum performance and unmatched security in an easy-to-use compact printer.



Certified Supplies

The perfect match for your RAIN RFID printer

Using inlays from leading manufacturers, as well as our own Zebra-branded inlays, Zebra offers 50+ labels in stock. We can also create a custom solution for you—with just about any thermal material and inlay to meet the requirements of your unique application. Designed and tested with Zebra printers and RAIN RFID readers, our Certified Supplies ensure high performance.

General purpose

- Paper and synthetic labels, designed for use with standard applications
- Best for non-metallic surfaces, plastics or corrugate
- ZBR2000 Zebra-branded inlay for longer read ranges and faster tag acquisition

Advanced

- Paper and synthetic labels that offer a higher level of readability performance than our general purpose labels
- ZBR4000 and ZBR4001 Zebra-branded advanced UHF RFID inlays offer a higher level of performance than general purpose inlays

Specialty

- Unique solutions and designs created to maximize read range for metal and challenging surfaces



Print Confident. Print Secure. Print Zebra.

One of the largest offerings of in-stock and ready-to-ship RAIN RFID labels



Outstanding Performance

The latest chip technology and proprietary inlays provide enhanced performance.



Reliable Consistency

The same label material used from order to order results in consistent print and adhesive performance every time.



RFID Solution Expertise

As the developer of RFID readers and printers, Zebra can recommend the labeling solution that optimizes the performance of each RFID solution.



Testing Capabilities

With our Voyantic test equipment, we can identify the optimal inlay for the surface being labeled to ensure maximum read ranges.



In-House Manufacturing Capabilities

Zebra's state-of-the-art presses and RFID manufacturing equipment enables us to meet your RFID supplies need quickly.



The Right Solution for Your Use Case

With over 300 certified combinations of direct thermal and thermal transfer materials and access to inlays from the leading providers, we can deliver the optimal solution for the surface to maximize read performance.



Z-Band Direct Thermal RFID Wristbands

- Z-Band Direct RFID SR in our classic shape is optimal for use when in close proximity to the reader
- Z-Band UltraSoft RFID LR features one of the softest materials on the market. The flag design and special inlay enables longer read ranges.



RFID Cards

- One of the world's first passive RFID cards to provide a read range of up to 50 feet
- 128 bits of EPC memory
- 512 bits of user memory
- 96 bits of read-only TID memory

Zebra-Branded Inlays

Pre-tested with Zebra readers and printers for industry-leading performance

General Purpose

Offers market-leading performance within most standard applications utilizing a 4-inch wide label.



ZBR2000 General Purpose Inlay

- Ultra-high sensitivity: read range up to 17m in free space

Advanced

These advanced inlays for use on 4-inch wide labels offer a higher level of read performance than our general purpose inlay for use where longer ranges are required. Provides efficient performance when placed on or near challenging materials, with omni-directional readability from almost any angle.



ZBR4000 Advanced Inlay

- Ultra-high sensitivity: read range up to 20m in free space



ZBR4001 Advanced High-Memory Inlay

- Ultra-high sensitivity: read range up to 12m in free space
- Memory: EPC memory: 448-bit; User memory: 1000-bit

RFID Printing and Encoding Service

Maximize your RFID solution with Zebra quality

Zebra's RFID Printing and Encoding Service provides serialized pre-printed and encoded RFID supplies to your specifications to support pilots and compliance needs.



ZipShip

ZipShip in-stock offering of RFID labels available in the most common sizes and label materials or we can create a custom solution



Standard Label Formats

Standard label formats to support common asset tag needs or provide us exactly what you want printed and encoded on the label

Location Technologies Hardware and Software

A digital view of your physical operations

Zebra offers a full portfolio of best-in-class hardware options for capturing location data, to satisfy a large variety of requirements for range, accuracy and precision. Combined with the power of Zebra MotionWorks® Enterprise platform, which translates this location data into meaningful insights, Zebra delivers the location expertise you need to maximize the benefits of real-time tracking in your organization.



Ultra Wideband Solutions

Zebra delivers real-time visibility with Ultra Wideband Solutions (UWB) —a real-time locating system (RTLS) that allows for a myriad of asset management applications. Accurately track personnel and equipment indoors and out. The UWB system provides the lowest cost-of-ownership in the industry by improving installation ease, visibility, scalability, performance, asset tracking and tag management.



WhereNet

The WhereNet RTLS provides the longest range RTLS capabilities and performance in all environments, including complex and hazardous ones. WhereNet's long tag-to-sensor range allows you to have real-time visibility and status information on your assets with a cost-effective RTLS network infrastructure.



Bluetooth® Low Energy Devices

Our family of Bluetooth Beacons and Bridges are quickly and easily deployed, available in multiple form factors and price points, and can be used for asset tracking and other location solutions.

Zebra MotionWorks® Enterprise

Powered by Zebra Savanna™

Zebra MotionWorks Enterprise is an innovative platform that allows organizations to turn enterprise asset locations into actionable business insights. It collects, manages and analyzes sense and state data from tagged enterprise resources, and feeds into a single integrated management console for enhanced visibility of the location and state of every resource.

Global Services

Maximize uptime and ROI

Whether it's understanding operational utilization, maximizing uptime, reducing device vulnerabilities or unlocking the data of your edge devices, Zebra provides expertise every step of the way.

Zebra Signature Services

Data insights from the technologies at the edge of your network can open up a world of new commercial opportunities. But without the right skills or resources, you could miss out on the full benefits. **Zebra Signature Services accelerate your ability to unlock intelligence** from your data, so you can run your business more productively.

RFID Design

New use cases for RAIN RFID emerge every day for Retail, Healthcare, Manufacturing, and Transportation and Logistics, yet the productivity and efficiency gains are easily lost in poor design or incomplete integration. RFID Design is a Signature Service that will improve the speed, cost and profitability of any RFID project. As a leader in the field, Zebra has the experience to ensure your RFID project delivers the business performance improvements you expect from your investment.

Zebra OneCare™ Maintenance Plans

Constant, peak performance and device uptime. That's the upside of protecting your Zebra investment while also reducing device vulnerabilities with our support services. Eliminate the unexpected disruptions and unbudgeted repair expenses and so much more. Whether you need comprehensive coverage, advanced device replacement, on-site support, assistance with technical issues, software support, or cloud-based visibility into your contracts, repair data, tech support cases, there's a Zebra OneCare™ plan that's right for you.*

And you can optimize and customize your support services to fit your specific business-critical needs with additional flexible service enhancements that provide expedited repair and shipping, battery maintenance, device commissioning and configuration, managed services and more.

Zebra VisibilityIQ™ Services

Reduce device vulnerabilities and exposure so you don't get caught off guard by device downtime, device health or battery failures. Zebra's visibility services provide cloud-based insights into your devices to tell you how your devices are performing, so you can decide what next steps you can take to improve your operations and maximize productivity.

Zebra's VisibilityIQ™ gives you data-driven, actionable insights when and how you need them. Get a clear view into how your devices are performing and know what next steps can push up productivity and drive down costs.

Zebra VisibilityIQ™ OneCare™

Powered by Zebra Savanna™

Included in all Zebra OneCare support agreements for Zebra mobile computers and scanners. View status of device repairs, technical issues, contracts, case reports and software, and LifeGuard™ security status visibility.**

* Repair turn-around time may differ by country and by Zebra product. ** VisibilityIQ OneCare available for mobile computers and scanners only.

Note: Information is subject to change and product availability may vary by region.

Gain edge-to-edge visibility with wall-to-wall choices, visit www.zebra.com/RFID



NA and Corporate Headquarters
+1 800 423 0442
inquiry4@zebra.com

Asia-Pacific Headquarters
+65 6858 0722
contact.apac@zebra.com

EMEA Headquarters
zebra.com/locations
contact.emea@zebra.com

Latin America Headquarters
zebra.com/locations
la.contactme@zebra.com

ZEBRA and the stylized Zebra head are trademarks of Zebra Technologies Corp., registered in many jurisdictions worldwide. Android is a trademark of Google LLC. Wi-Fi™ is a trademark of Wi-Fi Alliance®. All other trademarks are the property of their respective owners. ©2021 Zebra Technologies Corp. and/or its affiliates. 06/25/2021.